

### Course Benefits

- Highly interactive course for effective learning
- Understand Concepts through hands-on learning
- Project based learning
- International Certification (CLAD, CLD, CLA)

### Who Should Attend

- Engineering students
- Research Scholars
- Engineering professional looking for better prospects
- Engineering professional looking for international certification

### Infrastructure & Facilities

- State-of-the-art infrastructure for effective learning
- Licensed based NI Software (LabVIEW & Multisim)
- National Instruments Hardware (myRIO, myDAQ, WSN, ELVIS Board, Smart Camera, Robotic Starter Kit, Mechatronics Kits etc)

### Trainers

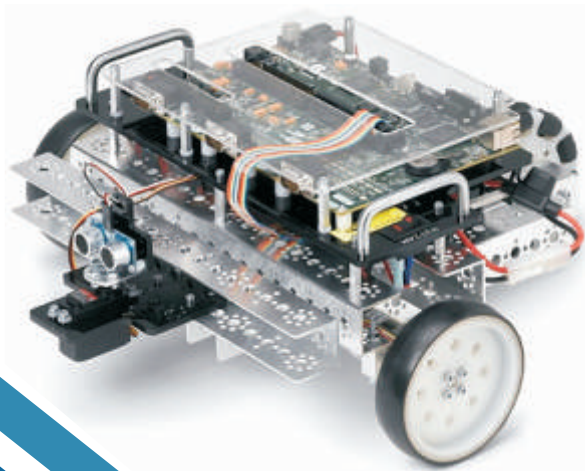
- National Instruments Certified (CLAD) trainers

### Achievements

- Qualified CLAD Certifications.
- NI based project won first prize in Inter-College Project Competition
- 78 Students successfully trained during academic session 2015-2016.

### Corporates using NI Platform

- |                                |                                       |
|--------------------------------|---------------------------------------|
| ■ ST Microelectronics          | ■ Philips                             |
| ■ Agilent Technologies         | ■ L&T Integrated Engineering Services |
| ■ Lucent Technologies          | ■ Eaton.                              |
| ■ Honda Motors.                | ■ StarCom Information Technology Ltd. |
| ■ National Physical Laboratory | ■ Cypress Semiconductors              |
| ■ Honeywell                    | ■ Siemens and many more               |



### Contacts

#### Md. Rashid Mahmood

Co-ordinator NI Innovation Centre  
Mobile No:9999254432  
Email: ni.coe@its.edu.in

#### Prof. Dinesh Chandra

HOD-ECE  
Mobile No:7840094640  
Email: hod.ece@its.edu.in

#### Dr. Vineet Kansal

Director, I.T.S. Engineering College  
Email: dir.engg@its.edu.in

#### Mailing Address:

Co-ordinator, NI Innovation Centre - Centre of Excellence  
I.T.S Engineering College  
Plot No. 46, Knowledge Park -III  
Greater Noida, G.B.Nagar, U.P-201308 ( India)  
PIN Code: 201308



I.T.S ENGINEERING COLLEGE



# NI Innovation Centre & LABVIEW Academy

Centre of Excellence

Training | Research | Consultancy | Project | International Certification

Learn • Innovate • Implement



## The Institute



I.T.S Engineering College, Greater Noida (NAAC Accredited), affiliated to Dr. APJ Abdul Kalam Technical University, Lucknow, approved by AICTE, New Delhi is the part of the conglomerate i.e. I.T.S-The Education Group, was established in 2006 under the able guidance of Dr. Bhure Lal, IAS (Retd.), Chairman BoG. The college is committed for offering engineering education in congenial environment with state-of-art infrastructure. The college is consciously working for industry-academia connect, collaborative research and entrepreneurial initiative. I.T.S Engineering College is approved as Business Incubator under MSME, Government of India. With a mindset to skill building and inter-disciplinary collaborative learning multiple industrial Center of Excellences

have been established in the college including SMC, Rockwell Automation, Syscom Morpho, Apple iOS, e-Yantra, Android Apps, SALT and Indian Testing Board. The college has been awarded National Education Excellence Award-2015 for excellent contribution in promoting excellent industry-academia interface by Honorable Chairman, AICTE.

The Department of Electronics and Communication Engineering (ECE) was established in 2006 with the aim to meet the requirements of the Industries and Academia. The department has setup e-yantra Embedded systems & Robotics lab under eLSI, project of MHRD conducted by IIT Bombay. The department is equipped with state-of-the-art Laboratories, Innovation Centre & Centre of Excellence to provide conducive environment for learning & investigation.

## To be Leading Centre of Learning & Innovation for Virtual Instrumentation

National Instruments (NI) Innovation Centre, Centre of Excellence was established in 2015 under the Department of Electronics and Communication Engineering in collaboration with National Instruments India Pvt. Ltd- The world's largest company dedicated to Virtual Instrumentation Technology. National Instruments is transforming the way Engineers and Scientists design, prototype and deploy systems for Measurement, Automation and Embedded Applications. The centre provides the platform for Training, Interdisciplinary Research, Projects & Industrial Solutions utilizing LabVIEW and its associated hardware.

### Vision

To prepare skilled engineers, ready for industries using the concept of graphical system design for implementing projects

### Mission

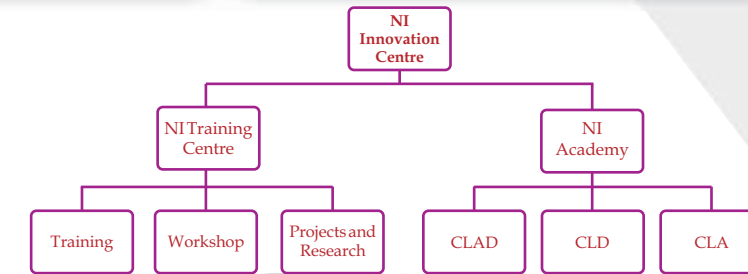
To equip students, engineering professionals and faculties with tools that accelerates productivity, innovation and discovery.

### Objectives

To provides opportunities, to enhance the knowledge and skills at a professional level. After completing the training, the trainees will be capable to handle the industrial projects on automation, testing and control. They will also be able to clear the Certified LabVIEW Associate Developer (CLAD) exam conducted by National Instruments USA

### Activities and Programs:

- Round the year Training programs by qualified trainers
- Faculty Development Programs
- Workshop and Guest talk by Industry professional
- Consultancy & Research Oriented Projects



## Training Modules

### Module I : Basics of LabVIEW (24 Hrs.)

- Navigating LabVIEW
- Troubleshooting & Debugging VIs
- Implementing a VI
- Developing Modular Applications
- Creating and Leveraging data Structures
- Managing File and Hardware Resources
- Sequential and State Machine Algorithms
- Data flow Challenges with Variables

### Module II : LabVIEW Advance (16 Hrs.)

- Asynchronous Communication, Queues
- Implementing Design Patterns
- Controlling the User Interface
- File I/O Techniques
- Improving an Existing VI
- Creating and Distributing Applications

## What The Centre Has For You ?



**Training**  
Skill Development

**Projects**  
Innovation Platform for UG/PG Students

**Research**  
Live Projects on NI Platform

**Certification**  
International Certification (CLAD, CLD & CLA)

**Consultancy**  
Industrial Solution for Automation